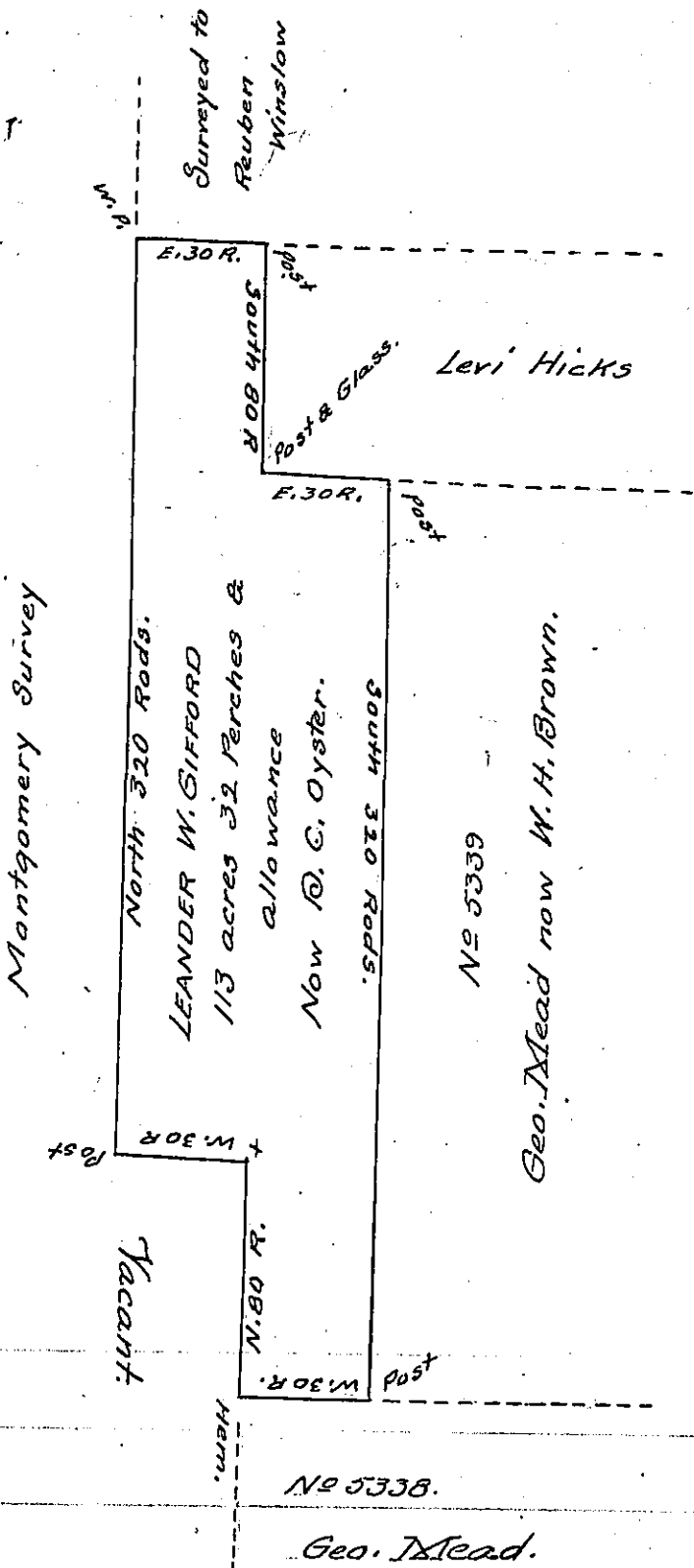


Beginning at the S.W. cor. of Levi Hicks Land.
 Thence East 30 Rods to the N.W. Cor. of W. No 5339
 South 320 Rods " " S. " " " " "
 West 30 " " " N. " " " " " 5338.
 North 80 " " " Q " " " " " " "
 West 30 " " " " " " " " " " "
 North 310 " " " " White Pine S.W. cor. of Winslow Survey
 East 30 " " " " Old post cor. in South line of Winslow Survey.
 South 80 " " " " Place of Beginning.



A DRAFT of a Tract of Land Situated in the Township of Benezette and County of Elk Containing 113 acres 32 perches and allowance of Six per. Cent for roads &c. Surveyed the 15th day of November 1884. in pursuance of a Warrant granted to Leander W. Gifford dated the 13th day of October 1884.

John Wainwright C.S.

To Thomas J. Stewart Esq.
 Secretary of Internal Affairs

IN TESTIMONY that the above is a copy of the original remaining on file in the Department of Internal Affairs of Pennsylvania, made conformably to an Act of Assembly approved the 16th day of February, 1833, I have hereunto set my Hand and caused the Seal of said Department to be affixed at Harrisburg, this Fourteenth day of February 1905.

John P. Stewart
 Secretary of Internal Affairs.